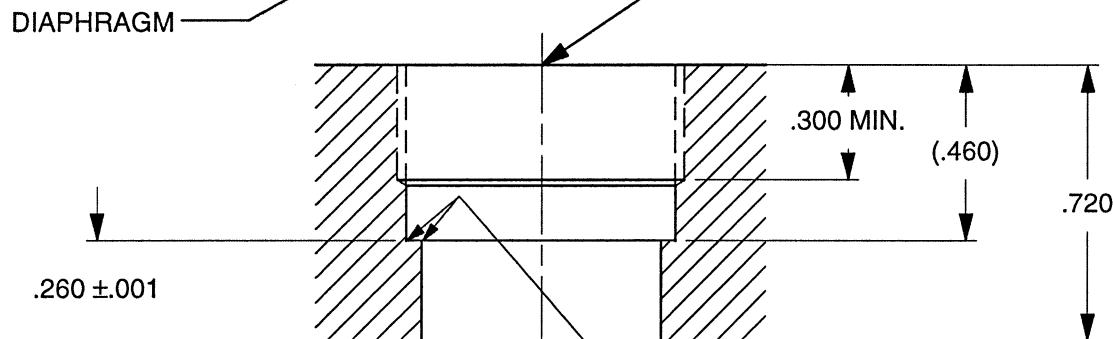


**PORT PREPARATION INSTRUCTIONS:**

DRILL 5/8 (.625 +.005/-0.00) DIA, THRU  
COUNTER BORE, 45/64 (Ø.708 +.003/-0.00) x .460 DEEP  
TAP 3/4-16, UNF-2B x .300 MINIMUM DEPTH



4. BODY/DIAPHRAGM MATERIAL, TITANIUM ALLOY.

3. WEIGHT, LESS CLAMP NUT-35 GRAMS

2. TORQUE ON 6230 CLAMP NUT: 20 LB-IN.

1. THESE DIAMETERS MUST BE CONCENTRIC TO .003 TIR.

<b>DYTRAN</b> INSTRUMENTS, INC.		CHATSWORTH, CA.		
SCALE 2X	REV	DATE	ECN	
DATE 6/29/07	PART NO. MODELS 2013D & 2013M10			
DRAWN N.C.	CHECKED	MAT'L		
APPROVED <i>7307</i>	NEXT ASSEMBLY		USED ON MODELS 2013D & 2013M10	
TITLE OUTLINE/INSTALLATION DRAWING MODELS 2013D & 2013M10			DWG NO. 127-2013D	
SHEET 1 OF 1				

<b>Model Number</b> 2013D	<b>PERFORMANCE SPECIFICATION</b>	<b>DOC NO</b> PS2013D
	<b>HIGH INTENSITY IEPE MICROPHONE</b>	REV. A, ECN 7426, 05/11/11



- HIGH INTENSITY
- EXCELLENT LINEARITY
- HERMETICALLY SEALED

**PHYSICAL**

Weight, Max (includes Seal & Hollow Clamp Nut)  
 Connector, Coaxial, Axially Mounted  
 Mounting Provision: Hollow Clamp Nut  
 Material : Housing / Connector  
 Material : Diaphragm

ENGLISH		SI	
0.84	oz	24	grams
10-32, UNF-2A		10-32, UNF-2A	
3/4 - 16 THD		3/4 - 16 THD	
Titanium		Titanium	
Titanium		Titanium	

**PERFORMANCE**

Sensitivity,  $\pm 10\%$  [1]  
 Range F.S For 5 Volts Out  
 Frequency Response,  $\pm 5\%$   
 Absolute Maximum Pressure  
 Equivalent Electrical Noise (Resolution)  
 Linearity [2]  
 Mounted Resonant Frequency  
 Maximum Raise Time of Input Pulse or Step  
 Lower -3db Frequency  
 Acceleration Sensitivity, Axial Direction

2	V/Psi	0.29	V/kpa
2.5	Psi	17.23	kpa
10 - 5000	Hz	10 - 5000	Hz
20	Psi	138	kpa
2.5E-05	Psi	1.72E-04	kpa
1	% F.S.,Max	1	% F.S.,Max
> 50	kHz	> 50	kHz
5	$\mu$ Sec	5	$\mu$ Sec
0.4	Hz	0.4	Hz
0.002	Psi /g	0.0014	kpa/m/s <sup>2</sup>

**ENVIRONMENTAL**

Maximum Vibration  
 Maximum Shock  
 Temperature Range  
 Thermal Coefficient of Sensitivity  
 Seal

$\pm 300$	g's,peak	$\pm 2943$	m/s <sup>2</sup> peak
$\pm 500$	g's,peak	$\pm 4905$	m/s <sup>2</sup> peak
-60 to +250	°F	-51 to +121	°C
0.03	%°F	0.05	%°C
Hermetic		Hermetic	

**Electrical**

Excitation (Compliance) Voltage Range [3]  
 Excitation Current Range  
 Output Impedence,Nom  
 Bias Voltage  
 Discharge Time Constant  
 Output Signal Polarity For Increasing Pressure

+20 to +30	VDC	+20 to +30	VDC
2 to 20	mA	2 to 20	mA
150	$\Omega$	150	$\Omega$
11 to 13	VDC	11 to 13	VDC
0.4 to 0.8	Sec	0.4 to 0.8	Sec
Positive Going		Positive Going	

**This family also includes:**

Model	Sensitivity (mV/Psi)	Range F.S (psi)	Time Constant (sec)	Operating Temperature (°F)

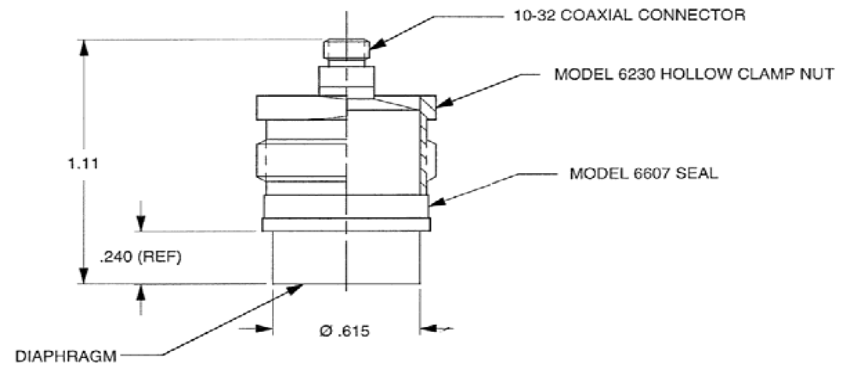
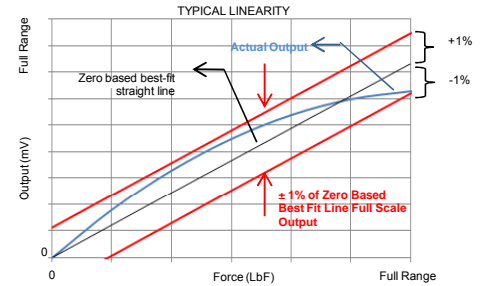
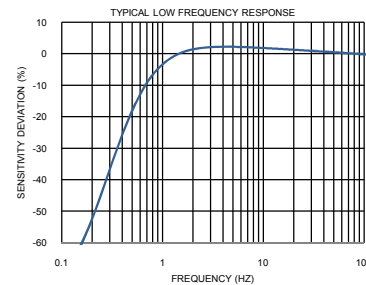
Refer to the performance specifications of the products in this family for detailed description.

**Supplied Accessories:**

- 1) Accredited calibration certificate (ISO 17025)
- 2) 6230 hollow clamp nut qty 1
- 3) 6607D delrin seals qty 2

**Notes:**

- [1] 0db reference: 2.9 E-09 psi
- [2] Measure using zero-based straight line method, % of F.S. or any lesser range.
- [3] Do not apply power to this system without current limiting, 20 mA MAX. To do so will destroy the IC charge amplifier.



Units on the line drawing are in inches. Refer to 127-2013D for more information.



21592 Marilla Street, Chatsworth, California 91311 Phone: 818.700.7818 Fax: 818.700.7880 www.dytran.com  
 For permission to reprint this content, please contact info@dytran.com